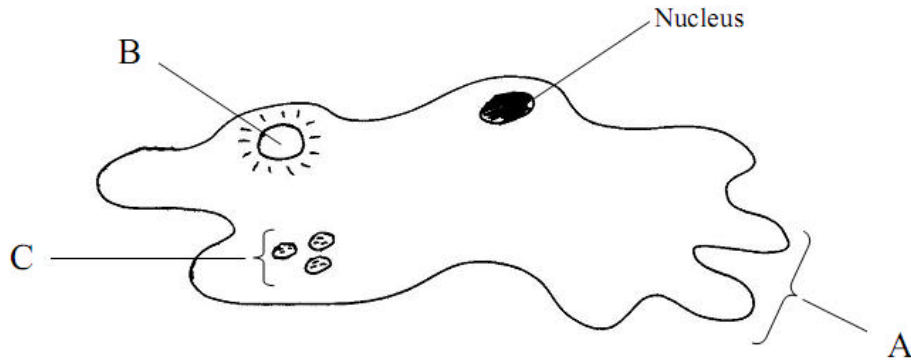


Name: \_\_\_\_\_

**Q.1**



- (a) Name the parts labelled A, B and C.  
 A ..... B ..... C .....
- (b) To which kingdom does *Amoeba* belong? .....
- (c) Is the cell of *Amoeba* prokaryotic or eukaryotic? .....
- (d) Give a reason for your answer to part (c) .....
- (e) Give **one** function of A in *Amoeba* .....
- (f) 1. Give **one** function of B in *Amoeba*.....  
 2. Suggest **one** reason why B is more active in freshwater amoebae than in marine amoebae.

**Q.2**

Distinguish between:

**(a)** ectoplasm and endoplasm

**(b)** food vacuole and contractile vacuole.