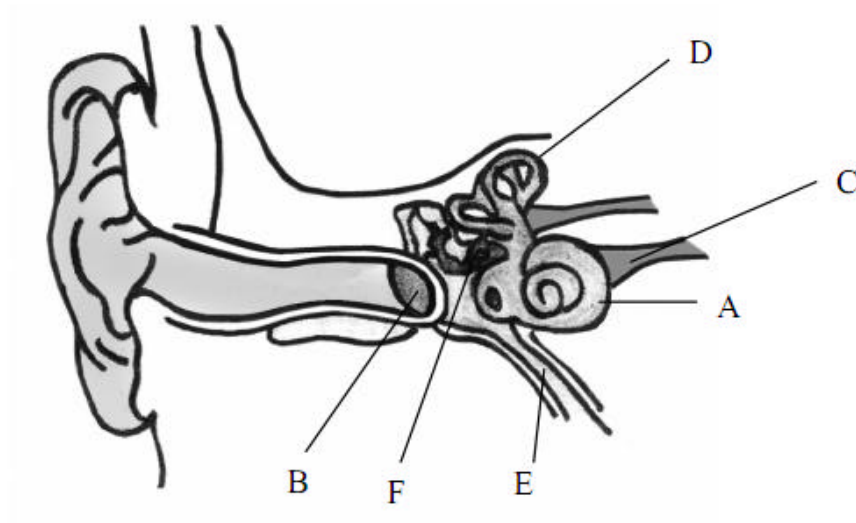
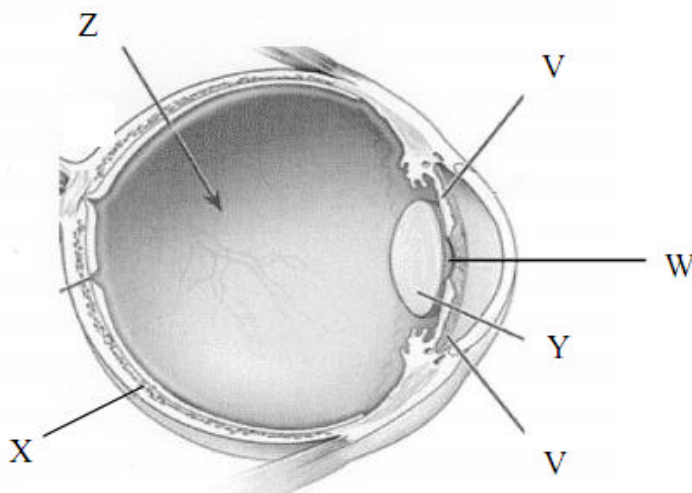


Name: _____

Q.1

- (i) The diagram above shows the internal structure of the human ear.
1. Name the structures labelled A, B, C.
 2. Give the functions of parts D and E.
 3. Which letters denote the parts of the ear in which nerve impulses are generated?
- (ii) In what part of *the eye* are nerve impulses generated?
- (iii) Suggest **one** way by which the ear may be protected.
- (iv) Explain how a corrective measure for a **named** defect of hearing **or** vision works.

Q.2

The diagram shows the human eye.

- (i) Name the parts labelled V, W and X.
- (ii) Give the functions of parts Y and Z.
- (iii) 1. Suspensory ligaments. 2. Cones. 3. Optic nerve. 4. Brain.
Outline the roles in vision of any **three** of the above structures.
- (iv) Explain how the iris works.
- (v) Suggest a reason why two eyes are better than one.